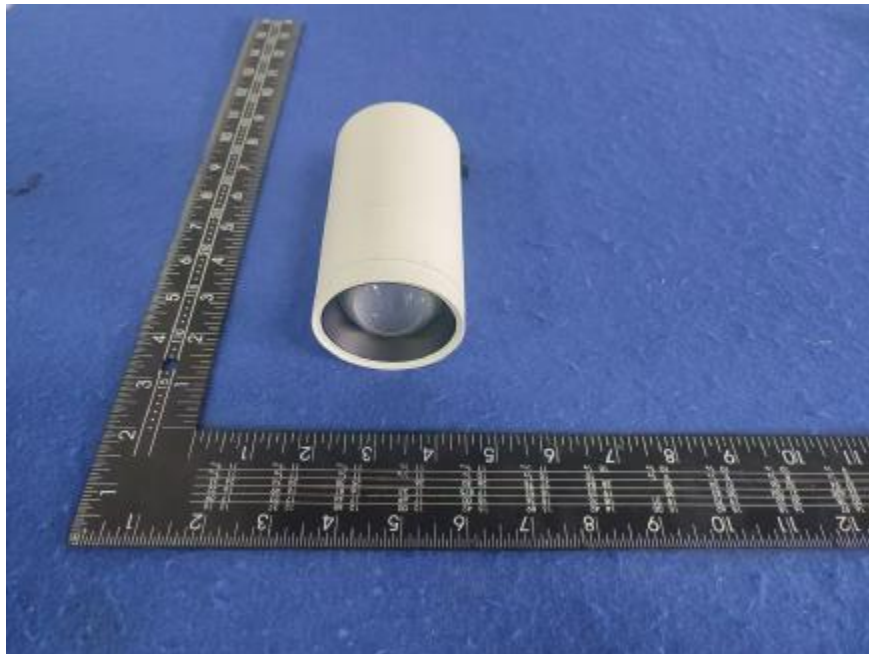


### Luminaire Photograph



Light Output Ratio:	37.1%	
Luminaire Power:	14.54 W	
SHR Nominal:	0.00	Calculated using the TM5
SHR Maximum:	0.25	fine grid method.

C Range: 0 - 360DEG  
C Interval: 30.0DEG  
Test Speed: HIGH  
Temperature: 25.3 °C  
Operators: zoe  
Test Date: 2025-1-10

Range: 0 - 180DEG  
Interval: 1.0DEG  
Test System: EVERFINE GO-SPEX500\_V1 SYSTEM V2.00.461  
Humidity: 65.0%  
Test Distance: 3.160m [K=1.0000]  
Remarks: LAMP: BXRE-30H1000-A-83 Ra: 95  
LENS: PM-1100 15R  
NOT DRIVER: 48V  
30minutes warm-up

## LUMINOUS INTENSITY DISTRIBUTION DIAGRAM

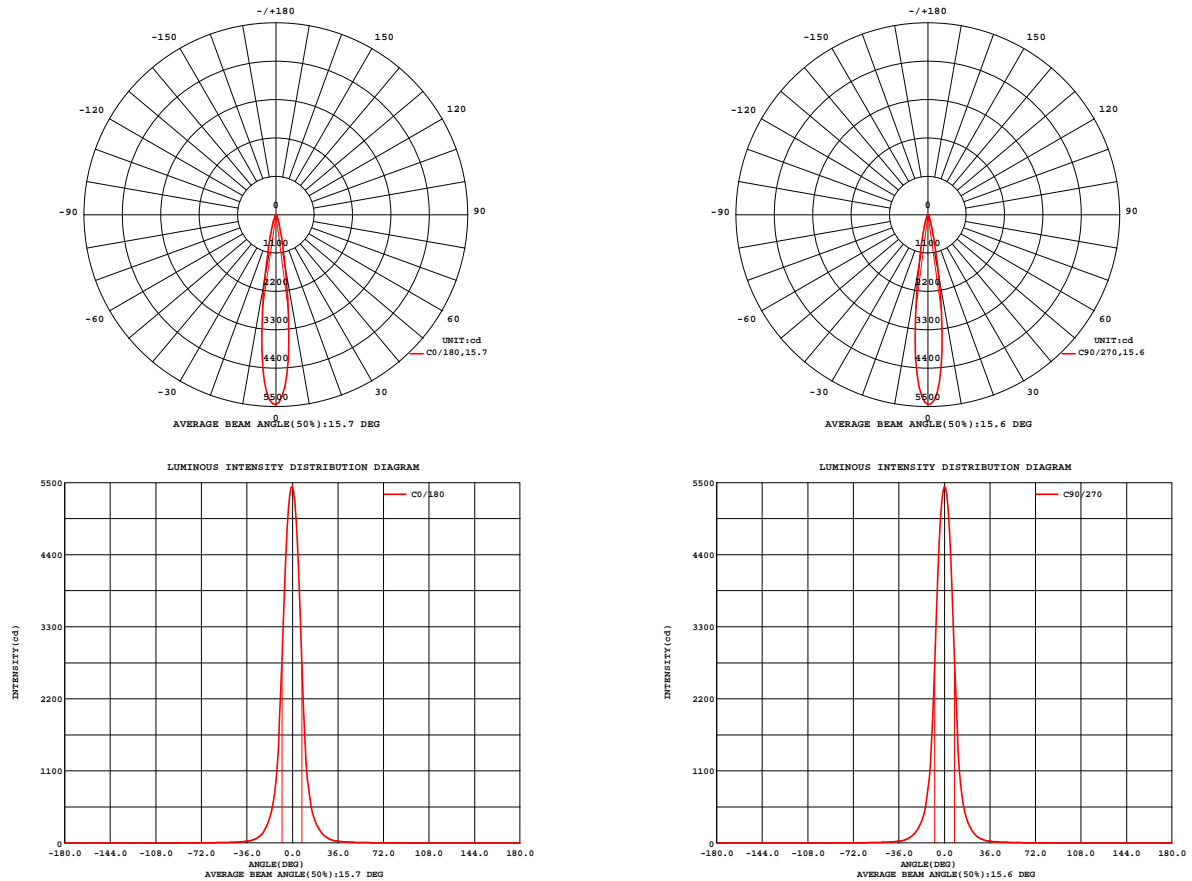


Fig. C0/C180

Fig. C90/C270

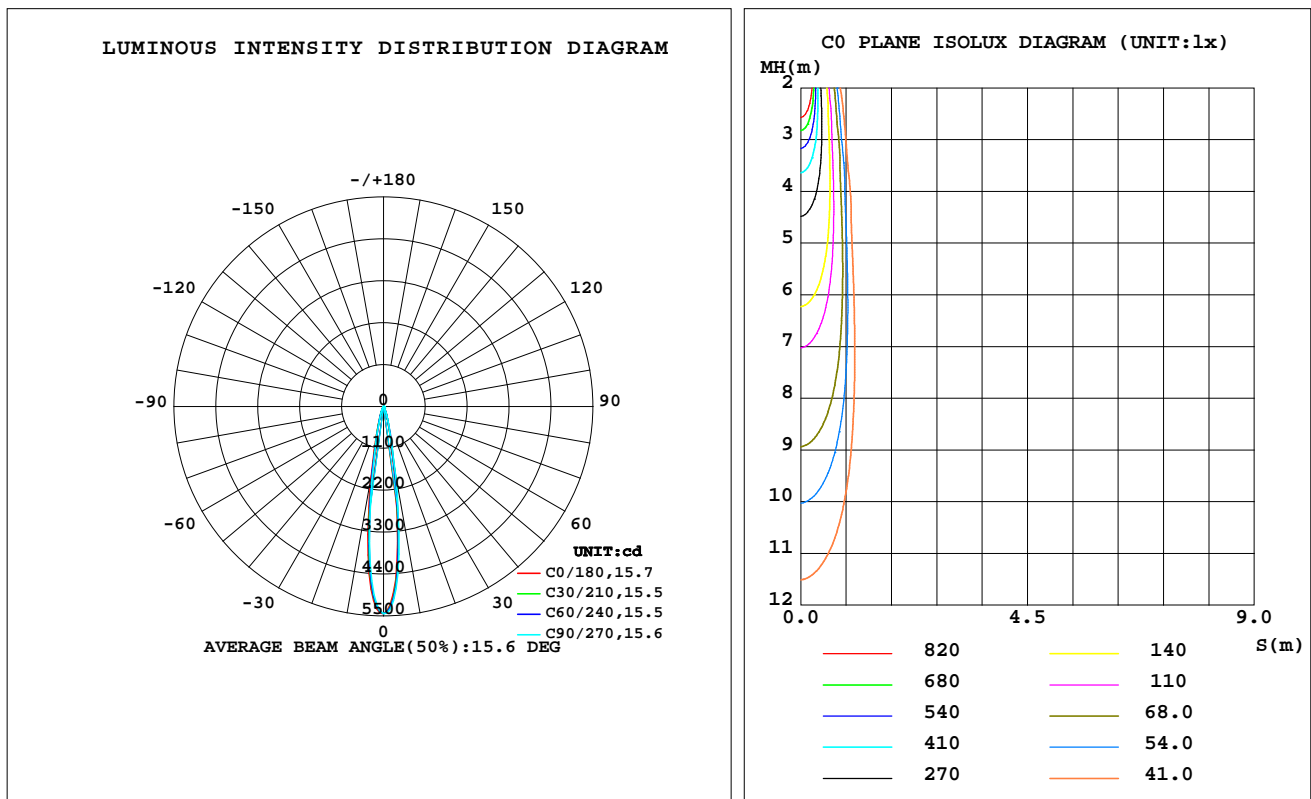
C Range: 0 - 360DEG  
C Interval: 30.0DEG  
Test Speed: HIGH  
Temperature: 25.3 °C  
Operators: zoe  
Test Date: 2025-1-10

Range: 0 - 180DEG  
Interval: 1.0DEG  
Test System: EVERFINE GO-SPEX500\_V1 SYSTEM V2.00.461  
Humidity: 65.0%  
Test Distance: 3.160m [K=1.0000]  
Remarks: LAMP: BXRE-30H1000-A-83 Ra: 95  
LENS: PM-1100 15R  
NOT DRIVER: 48V  
30minutes warm-up

## LUMINAIRE PHOTOMETRIC TEST REPORT

Test:U:47.997V I:0.3030A P:14.543W PF:1.0000 Freq:0Hz Lamp Flux:1597.41x1 lm		
NAME: OZ48-SBZ-64	TYPE:	WEIGHT:
SPEC.: 3000K	DIM.:	SERIAL No.: 2501100048
MFR.: RISE	SUR.: 0.00246176m2	Shielding Angle:

DATA OF LAMP		PHOTOMETRIC DATA Eff: 40.75 lm/W			
MODEL	Brideglux	Imax(cd)	5438	S/MH(C0/180)	0.28
NOMINAL POWER(W)	15	LOR(%)	37.1	S/MH(C90/270)	0.26
RATED VOLTAGE(V)	48	TOTAL FLUX(lm)	592.58	UP,DN(C0-180)	0.0,18.8
NOMINAL FLUX(lm)	1597.41	CIE CLASS	DIRECT	UP,DN(C180-360)	0.0,18.3
LAMPS INSIDE	1	up(%)	0.0	CIBSE SHR NOM	0.00
TEST VOLTAGE(V)	48	down(%)	37.1	CIBSE SHR MAX	0.25



C Range: 0 - 360DEG  
C Interval: 30.0DEG  
Test Speed: HIGH  
Temperature:25.3℃  
Operators:zoe  
Test Date:2025-1-10

Range: 0 - 180DEG  
Interval: 1.0DEG  
Test System:EVERFINE GO-SPEX500\_V1 SYSTEM V2.00.461  
Humidity:65.0%  
Test Distance:3.160m [K=1.0000]  
Remarks: LAMP:BXRE-30H1000-A-83 Ra:95  
LENS:PM-1100 15R  
NOT DRIVER:48V  
30minutes warm-up

## ZONAL FLUX DIAGRAM

### ZONAL FLUX DIAGRAM:

	C0	C45	C90	C135	C180	C225	C270	C315		zone	total	%lum,lamp
10	1531	1690	1860	1838	1909	1692	1529	1512	0- 10	315.0	315.0	53.2,19.7
20	251.2	253.8	257.0	258.5	269.5	252.3	244.3	248.2	10- 20	179.6	494.6	83.5,31
30	54.68	56.76	54.86	53.24	54.55	56.34	54.78	53.86	20- 30	56.72	551.4	93,34.5
40	18.77	19.64	19.36	18.74	19.10	19.40	19.07	18.84	30- 40	19.96	571.3	96.4,35.8
50	9.697	9.923	9.949	9.583	9.536	9.376	9.671	9.591	40- 50	10.38	581.7	98.2,36.4
60	5.461	5.653	5.682	5.255	5.196	5.014	4.976	5.276	50- 60	6.584	588.3	99.3,36.8
70	1.660	1.799	1.840	1.622	1.669	1.501	1.432	1.542	60- 70	3.194	591.5	99.8,37
80	0.3999	0.4368	0.4287	0.3751	0.4136	0.3606	0.3354	0.3637	70- 80	0.9517	592.4	100,37.1
90	0	0	0	0	0	0	0	0	80- 90	0.1501	592.6	100,37.1
100	0	0	0	0	0	0	0	0	90-100	0	592.6	100,37.1
110	0	0	0	0	0	0	0	0	100-110	0	592.6	100,37.1
120	0	0	0	0	0	0	0	0	110-120	0	592.6	100,37.1
130	0	0	0	0	0	0	0	0	120-130	0	592.6	100,37.1
140	0	0	0	0	0	0	0	0	130-140	0	592.6	100,37.1
150	0	0	0	0	0	0	0	0	140-150	0	592.6	100,37.1
160	0	0	0	0	0	0	0	0	150-160	0	592.6	100,37.1
170	0	0	0	0	0	0	0	0	160-170	0	592.6	100,37.1
180	0	0	0	0	0	0	0	0	170-180	0	592.6	100,37.1
DEG	LUMINOUS INTENSITY:cd									UNIT:lm		

C Range: 0 - 360DEG  
C Interval: 30.0DEG  
Test Speed: HIGH  
Temperature:25.3℃  
Operators:zoe  
Test Date:2025-1-10

Range: 0 - 180DEG  
Interval: 1.0DEG  
Test System:EVERFINE GO-SPEX500\_V1 SYSTEM V2.00.461  
Humidity:65.0%  
Test Distance:3.160m [K=1.0000]  
Remarks: LAMP:BXRE-30H1000-A-83 Ra:95  
LENS:PM-1100 15R  
NOT DRIVER:48V  
30minutes warm-up

### LUMINANCE LIMITATION CURVES

Test:U:47.997V I:0.3030A P:14.543W PF:1.0000 Freq:0Hz  
Lamp Flux:1597.4lx1 lm

NAME: OZ48-SBZ-64

TYPE:

WEIGHT:

SPEC.: 3000K

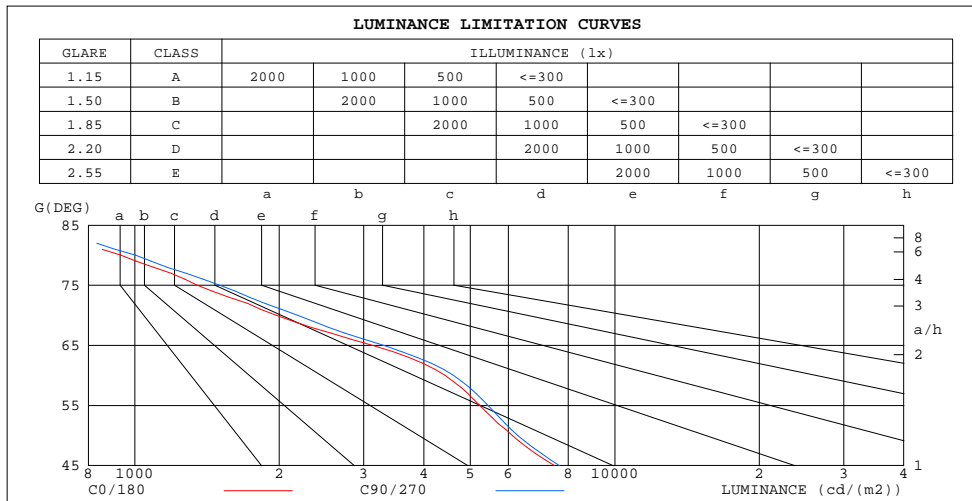
DIM.:

SERIAL No.: 2501100048

MFR.: RISE

SUR.: 0.00246176m2

Shielding Angle:



LUMINANCE cd/(m2)		
G(DEG)	C0/180	C90/270
85	528	550
80	935	1003
75	1350	1502
70	1970	2185
65	3131	3300
60	4434	4616
55	5232	5445
50	6125	6287
45	7497	7678

C Range: 0 - 360DEG  
C Interval: 30.0DEG  
Test Speed: HIGH  
Temperature:25.3℃  
Operators:zoe  
Test Date:2025-1-10

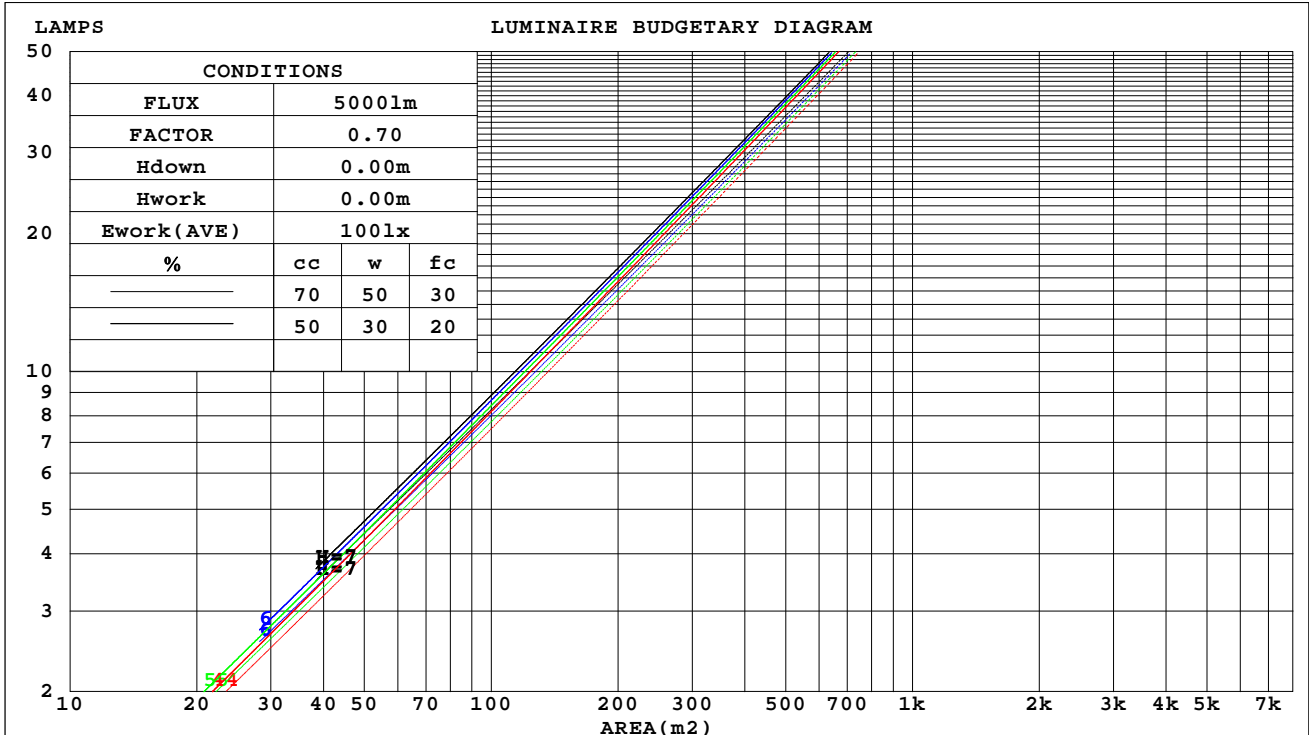
Range: 0 - 180DEG  
Interval: 1.0DEG  
Test System:EVERFINE GO-SPEX500\_V1 SYSTEM V2.00.461  
Humidity:65.0%  
Test Distance:3.160m [K=1.0000]  
Remarks: LAMP:BXRE-30H1000-A-83 Ra:95  
LENS:PM-1100 15R  
NOT DRIVER:48V  
30minutes warm-up

## CU AND LUMINAIRE BUDGETARY ESTIMATE DIAGRAM

Test:U:47.997V I:0.3030A P:14.543W PF:1.0000 Freq:0Hz  
Lamp Flux:1597.41x1 lm

NAME: OZ48-SBZ-64	TYPE:	WEIGHT:
SPEC.: 3000K	DIM.:	SERIAL No.: 2501100048
MFR.: RISE	SUR.: 0.00246176m2	Shielding Angle:

cc	80%			70%			50%			30%			10%			0
w	50%	30%	10%	50%	30%	10%	50%	30%	10%	50%	30%	10%	50%	30%	10%	0
fc	20%			20%			20%			20%			20%			0
RCR	RCR:Room Cavity Ratio															



C Range: 0 - 360DEG  
C Interval: 30.0DEG  
Test Speed: HIGH  
Temperature:25.3℃  
Operators:zoe  
Test Date:2025-1-10

Range: 0 - 180DEG  
Interval: 1.0DEG  
Test System:EVERFINE GO-SPEX500\_V1 SYSTEM V2.00.461  
Humidity:65.0%  
Test Distance:3.160m [K=1.0000]  
Remarks: LAMP:BXRE-30H1000-A-83 Ra:95  
LENS:PM-1100 15R  
NOT DRIVER:48V  
30minutes warm-up

### WEC AND CCEC

Test:U:47.997V I:0.3030A P:14.543W PF:1.0000 Freq:0Hz Lamp Flux:1597.4lx1 lm		
NAME: OZ48-SBZ-64	TYPE:	WEIGHT:
SPEC.: 3000K	DIM.:	SERIAL No.: 2501100048
MFR.: RISE	SUR.: 0.00246176m2	Shielding Angle:

cc	80%			70%			50%			30%			10%			0
w	50%	30%	10%	50%	30%	10%	50%	30%	10%	50%	30%	10%	50%	30%	10%	0
fc	20%			20%			20%			20%			20%			0
RCR	RCR:Room Cavity Ratio						Wall Exitance Coefficients(WEC)									
0.0																
1.0	.048	.027	.009	.046	.026	.008	.041	.024	.008	.037	.021	.007	.033	.019	.006	
2.0	.044	.024	.007	.042	.023	.007	.039	.021	.007	.035	.020	.006	.032	.018	.006	
3.0	.041	.022	.007	.039	.021	.006	.036	.020	.006	.033	.018	.006	.031	.017	.005	
4.0	.038	.020	.006	.037	.019	.006	.034	.018	.005	.032	.017	.005	.029	.016	.005	
5.0	.036	.018	.005	.034	.018	.005	.032	.017	.005	.030	.016	.005	.028	.015	.005	
6.0	.033	.017	.005	.032	.016	.005	.030	.016	.005	.029	.015	.004	.027	.014	.004	
7.0	.031	.016	.004	.031	.015	.004	.029	.015	.004	.027	.014	.004	.026	.013	.004	
8.0	.030	.015	.004	.029	.014	.004	.028	.014	.004	.026	.013	.004	.025	.013	.004	
9.0	.028	.014	.004	.028	.013	.004	.026	.013	.004	.025	.013	.004	.024	.012	.004	
10.0	.027	.013	.004	.026	.013	.004	.025	.012	.003	.024	.012	.003	.023	.012	.003	

cc	80%			70%			50%			30%			10%			0
w	50%	30%	10%	50%	30%	10%	50%	30%	10%	50%	30%	10%	50%	30%	10%	0
fc	20%			20%			20%			20%			20%			0
RCR	RCR:Room Cavity Ratio						Ceiling Cavity Exitance Coefficients(CCEC)									
0.0	.071	.071	.071	.060	.060	.060	.041	.041	.041	.024	.024	.024	.008	.008	.008	
1.0	.062	.059	.055	.053	.050	.047	.036	.035	.033	.021	.020	.019	.007	.006	.006	
2.0	.055	.049	.044	.047	.042	.038	.032	.029	.027	.019	.017	.016	.006	.006	.005	
3.0	.050	.042	.036	.043	.036	.031	.029	.025	.022	.017	.015	.013	.005	.005	.004	
4.0	.045	.036	.030	.038	.031	.026	.026	.022	.018	.015	.013	.011	.005	.004	.004	
5.0	.041	.032	.025	.035	.027	.022	.024	.019	.015	.014	.011	.009	.004	.004	.003	
6.0	.037	.028	.021	.032	.024	.018	.022	.017	.013	.013	.010	.008	.004	.003	.003	
7.0	.034	.025	.018	.029	.021	.016	.020	.015	.011	.012	.009	.007	.004	.003	.002	
8.0	.032	.022	.016	.027	.019	.014	.019	.014	.010	.011	.008	.006	.004	.003	.002	
9.0	.029	.020	.014	.025	.017	.012	.018	.012	.008	.010	.007	.005	.003	.002	.002	
10.0	.028	.018	.012	.024	.016	.010	.016	.011	.007	.010	.007	.004	.003	.002	.001	

C Range: 0 - 360DEG  
C Interval: 30.0DEG  
Test Speed: HIGH  
Temperature:25.3℃  
Operators:zoe  
Test Date:2025-1-10

Range: 0 - 180DEG  
Interval: 1.0DEG  
Test System:EVERFINE GO-SPEX500\_V1 SYSTEM V2.00.461  
Humidity:65.0%  
Test Distance:3.160m [K=1.0000]  
Remarks: LAMP:BXRE-30H1000-A-83 Ra:95  
LENS:PM-1100 15R  
NOT DRIVER:48V  
30minutes warm-up

## UGR(Unified Glare Rating) Table

Test:U:47.997V I:0.3030A P:14.543W PF:1.0000 Freq:0Hz Lamp Flux:1597.4lx1 lm										
NAME: OZ48-SBZ-64					TYPE:			WEIGHT:		
SPEC.: 3000K					DIM.:			SERIAL No.: 2501100048		
MFR.: RISE					SUR.: 0.00246176m2			Shielding Angle:		
ceiling/cavity	0.7	0.7	0.5	0.5	0.3	0.7	0.7	0.5	0.5	0.3
walls	0.5	0.3	0.5	0.3	0.3	0.5	0.3	0.5	0.3	0.3
working plane	0.2	0.2	0.2	0.2	0.2	0.2	0.2	0.2	0.2	0.2
Room dimensions	Viewed crosswise					Viewed endwise				
x = 2H y = 2H	9.0	9.6	9.2	9.8	9.9	9.1	9.7	9.3	9.8	10.0
3H	9.3	9.8	9.5	10.0	10.2	9.4	9.9	9.6	10.1	10.3
4H	9.3	9.8	9.5	10.0	10.2	9.4	10.0	9.7	10.2	10.4
6H	9.3	9.8	9.5	10.0	10.2	9.4	9.9	9.7	10.1	10.4
8H	9.2	9.7	9.5	10.0	10.2	9.4	9.9	9.7	10.1	10.4
12H	9.2	9.7	9.5	9.9	10.2	9.3	9.8	9.6	10.1	10.3
4H 2H	9.2	9.8	9.5	10.0	10.2	9.3	9.8	9.5	10.0	10.2
3H	9.5	10.0	9.8	10.2	10.5	9.6	10.1	9.9	10.4	10.6
4H	9.6	10.0	9.9	10.3	10.6	9.7	10.1	10.0	10.4	10.7
6H	9.5	9.9	9.9	10.2	10.6	9.7	10.1	10.0	10.4	10.7
8H	9.5	9.9	9.9	10.2	10.6	9.7	10.0	10.0	10.4	10.7
12H	9.4	9.8	9.9	10.1	10.5	9.6	9.9	10.0	10.3	10.7
8H 4H	9.5	9.8	9.9	10.2	10.5	9.6	10.0	10.0	10.3	10.7
6H	9.5	9.8	9.9	10.2	10.6	9.6	9.9	10.0	10.3	10.7
8H	9.4	9.7	9.9	10.1	10.6	9.6	9.9	10.0	10.3	10.7
12H	9.4	9.6	9.9	10.1	10.5	9.5	9.8	10.0	10.2	10.7
12H 4H	9.4	9.8	9.8	10.1	10.5	9.6	9.9	10.0	10.3	10.7
6H	9.4	9.7	9.9	10.1	10.5	9.6	9.8	10.0	10.3	10.7
8H	9.4	9.6	9.9	10.1	10.5	9.5	9.8	10.0	10.2	10.7
Variations with the observer position at spacings(CIE Pub.117):										
S = 1.0H	+ 0.9 / - 1.3					+ 0.9 / - 1.2				
1.5H	+ 1.3 / - 0.7					+ 1.3 / - 0.7				
2.0H	+ 1.3 / - 1.3					+ 1.2 / - 1.3				

CIE Pub.117, 1597 lm Total Lamp Luminous Flux Correct (8log(F/F0) = 1.6)  
Area: 0.00246176 m2

C Range: 0 - 360DEG  
C Interval: 30.0DEG  
Test Speed: HIGH  
Temperature:25.3℃  
Operators:zoe  
Test Date:2025-1-10

Range: 0 - 180DEG  
Interval: 1.0DEG  
Test System:EVERFINE GO-SPEX500\_V1 SYSTEM V2.00.461  
Humidity:65.0%  
Test Distance:3.160m [K=1.0000]  
Remarks: LAMP:BXRE-30H1000-A-83 Ra:95  
LENS:PM-1100 15R  
NOT DRIVER:48V  
30minutes warm-up



### UTILIZATION FACTORS TABLE

Test:U:47.997V I:0.3030A P:14.543W PF:1.0000 Freq:0Hz Lamp Flux:1597.4lx1 lm		
NAME: OZ48-SBZ-64	TYPE:	WEIGHT:
SPEC.: 3000K	DIM.:	SERIAL No.: 2501100048
MFR.: RISE	SUR.: 0.00246176m2	Shielding Angle:

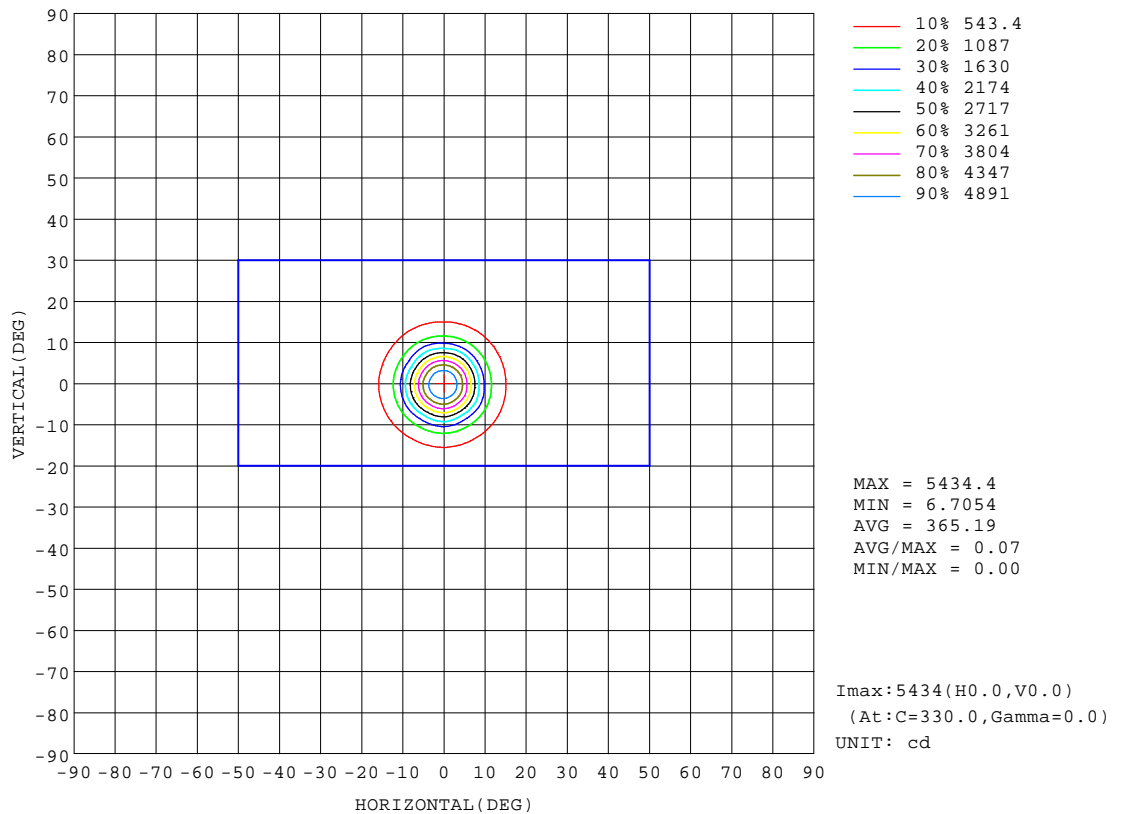
REFLECTANCE										
Ceiling	0.8	0.8	0.8	0.7	0.7	0.7	0.5	0.5	0.5	0
Walls	0.7	0.5	0.3	0.7	0.5	0.3	0.7	0.5	0.3	0
Working plane	0.2	0.2	0.2	0.2	0.2	0.2	0.2	0.2	0.2	0
ROOM INDEX	UTILIZATION FACTORS(PERCENT) $k(RI) \times RCR = 5$									
k = 0.60	33	31	30	33	31	30	33	31	29	28
0.80	36	34	32	36	34	32	35	33	32	31
1.00	37	35	34	37	35	34	36	35	34	32
1.25	39	37	36	38	37	35	38	36	35	34
1.50	40	38	37	39	38	37	38	37	36	35
2.00	41	39	38	40	39	38	39	38	37	35
2.50	41	40	39	41	39	38	39	38	38	36
3.00	42	40	39	41	40	39	40	39	38	36
4.00	42	41	41	42	41	40	40	40	39	37
5.00	43	42	41	42	41	41	41	40	40	37
ROOM INDEX	UF(total)									Direct
According to DIN EN 13032-2 2004			Suspended					SHRNOM = 1.25		

C Range: 0 - 360DEG  
C Interval: 30.0DEG  
Test Speed: HIGH  
Temperature:25.3℃  
Operators:zoe  
Test Date:2025-1-10

Range: 0 - 180DEG  
Interval: 1.0DEG  
Test System:EVERFINE GO-SPEX500\_V1 SYSTEM V2.00.461  
Humidity:65.0%  
Test Distance:3.160m [K=1.0000]  
Remarks: LAMP:BXRE-30H1000-A-83 Ra:95  
LENS:PM-1100 15R  
NOT DRIVER:48V  
30minutes warm-up

## ISOCANDELA DIAGRAM

Test:U:47.997V I:0.3030A P:14.543W PF:1.0000 Freq:0Hz Lamp Flux:1597.4lx1 lm		
NAME: OZ48-SBZ-64	TYPE:	WEIGHT:
SPEC.: 3000K	DIM.:	SERIAL No.: 2501100048
MFR.: RISE	SUR.: 0.00246176m2	Shielding Angle:

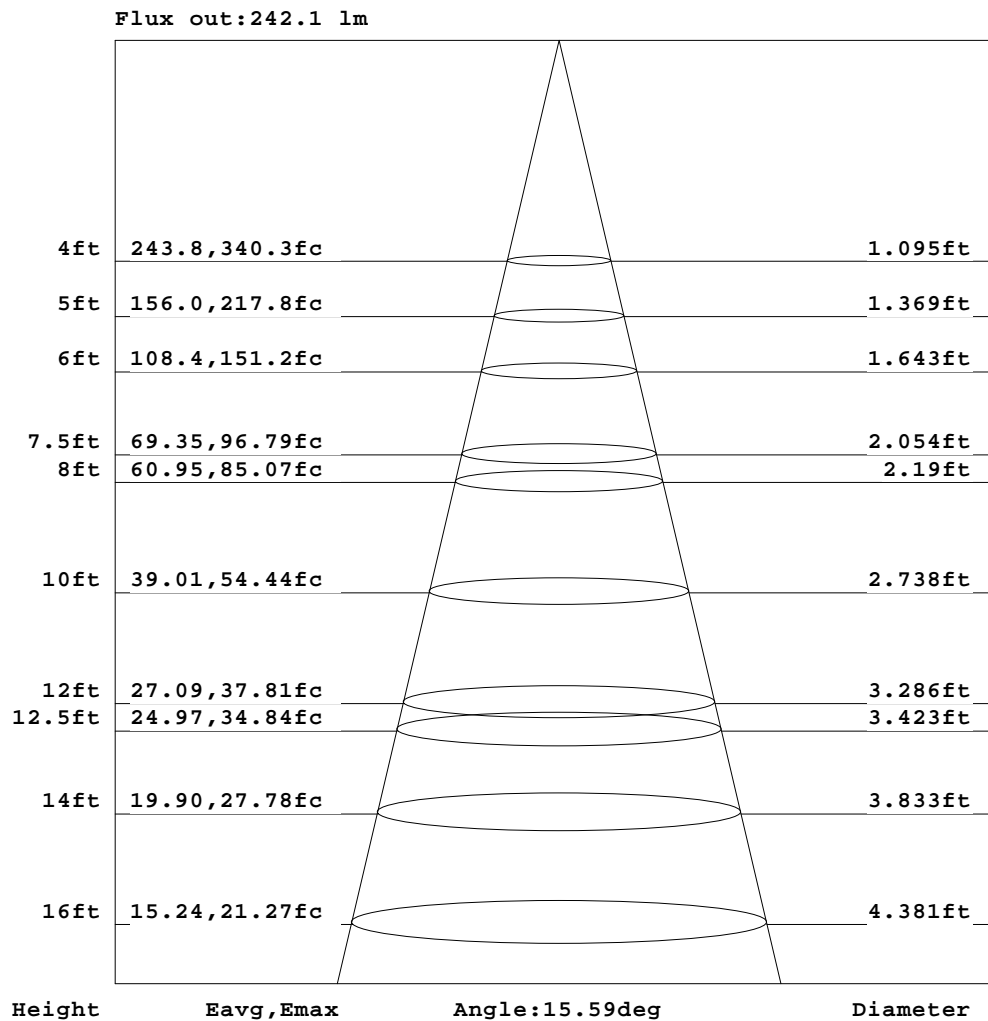


C Range: 0 - 360DEG  
C Interval: 30.0DEG  
Test Speed: HIGH  
Temperature: 25.3 °C  
Operators: zoe  
Test Date: 2025-1-10

Range: 0 - 180DEG  
Interval: 1.0DEG  
Test System: EVERFINE GO-SPEX500\_V1 SYSTEM V2.00.461  
Humidity: 65.0%  
Test Distance: 3.160m [K=1.0000]  
Remarks: LAMP: BXRE-30H1000-A-83 Ra: 95  
LENS: PM-1100 15R  
NOT DRIVER: 48V  
30minutes warm-up

## AAI Figure

Test:U:47.997V I:0.3030A P:14.543W PF:1.0000 Freq:0Hz Lamp Flux:1597.4lx1 lm		
NAME: OZ48-SBZ-64	TYPE:	WEIGHT:
SPEC.: 3000K	DIM.:	SERIAL No.: 2501100048
MFR.: RISE	SUR.: 0.00246176m2	Shielding Angle:



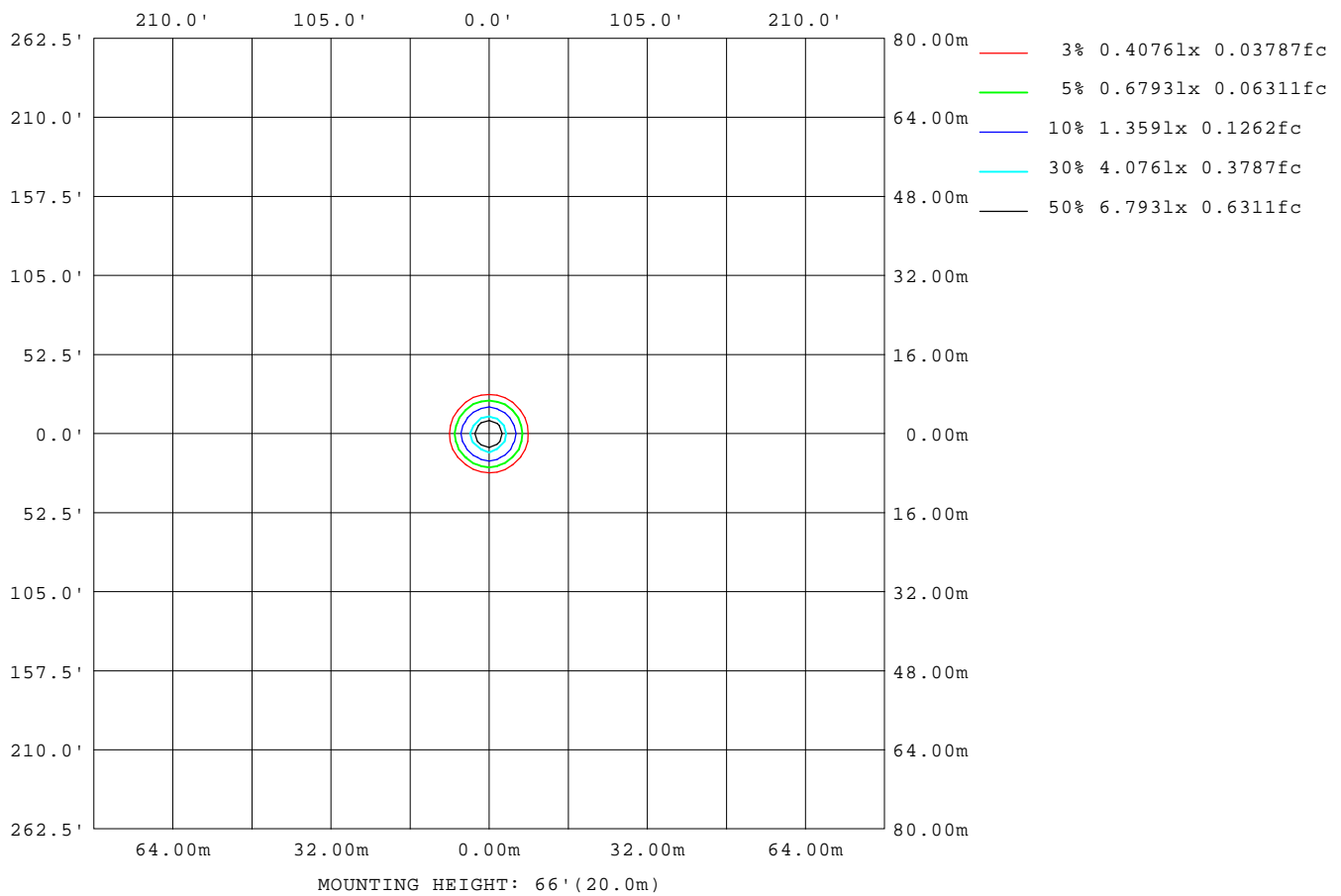
Note:The Curves indicate the illuminated area and the average illumination when the luminaire is at different distance.

C Range: 0 - 360DEG  
C Interval: 30.0DEG  
Test Speed: HIGH  
Temperature:25.3℃  
Operators:zoe  
Test Date:2025-1-10

Range: 0 - 180DEG  
Interval: 1.0DEG  
Test System:EVERFINE GO-SPEX500\_V1 SYSTEM V2.00.461  
Humidity:65.0%  
Test Distance:3.160m [K=1.0000]  
Remarks: LAMP:BXRE-30H1000-A-83 Ra:95  
LENS:PM-1100 15R  
NOT DRIVER:48V  
30minutes warm-up

## ISOLUX DIAGRAM

Test:U:47.997V I:0.3030A P:14.543W PF:1.0000 Freq:0Hz Lamp Flux:1597.4lx1 lm		
NAME: OZ48-SBZ-64	TYPE:	WEIGHT:
SPEC.: 3000K	DIM.:	SERIAL No.: 2501100048
MFR.: RISE	SUR.: 0.00246176m2	Shielding Angle:



C Range: 0 - 360DEG  
C Interval: 30.0DEG  
Test Speed: HIGH  
Temperature: 25.3 °C  
Operators: zoe  
Test Date: 2025-1-10

Range: 0 - 180DEG  
Interval: 1.0DEG  
Test System: EVERFINE GO-SPEX500\_V1 SYSTEM V2.00.461  
Humidity: 65.0%  
Test Distance: 3.160m [K=1.0000]  
Remarks: LAMP: BXRE-30H1000-A-83 Ra: 95  
LENS: PM-1100 15R  
NOT DRIVER: 48V  
30minutes warm-up

## LED Avg.L Report

Test:U:47.997V I:0.3030A P:14.543W PF:1.0000 Freq:0Hz Lamp Flux:1597.41x1 lm		
NAME: OZ48-SBZ-64	TYPE:	WEIGHT:
SPEC.: 3000K	DIM.:	SERIAL No.: 2501100048
MFR.: RISE	SUR.: 0.00246176m2	Shielding Angle:

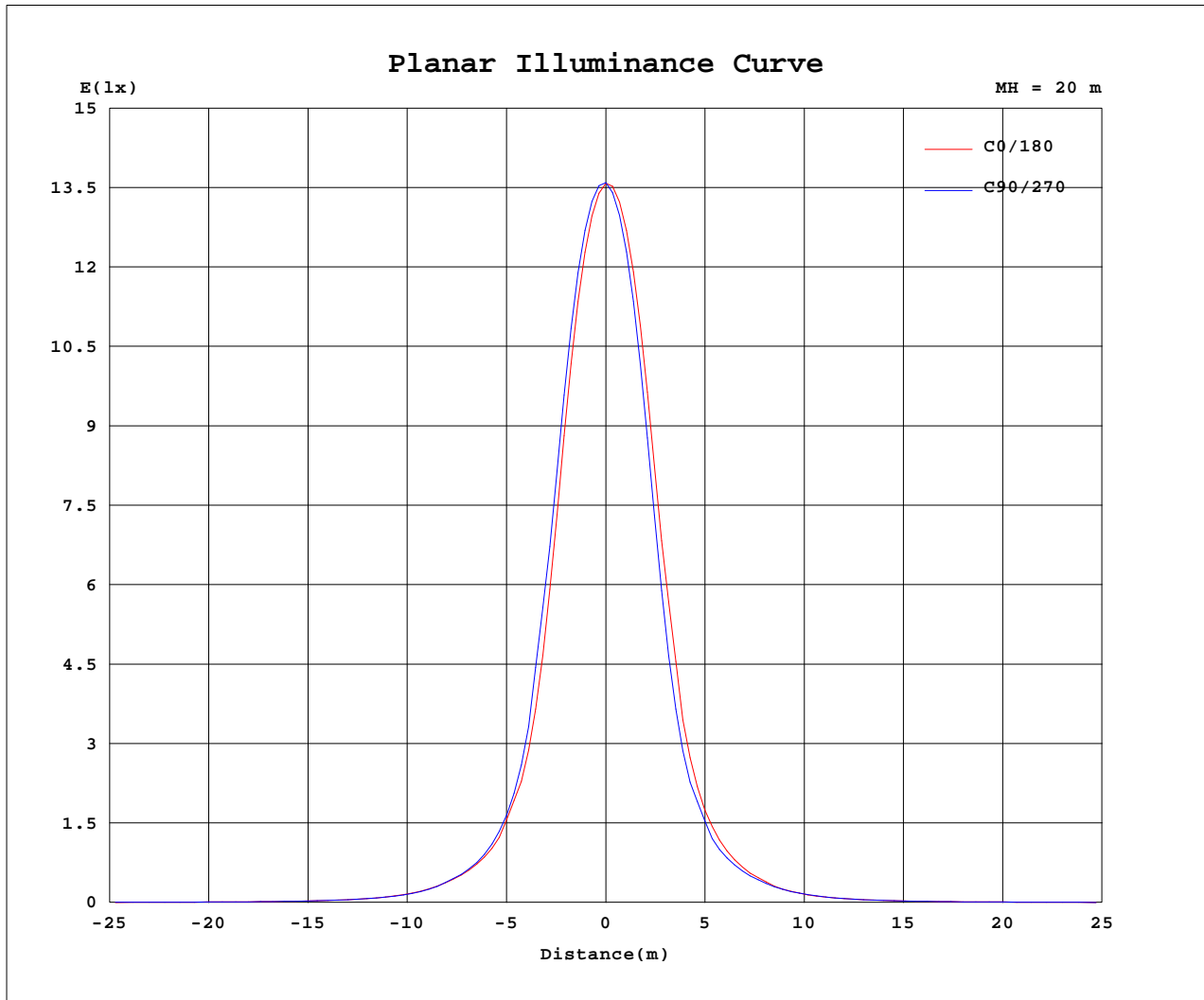
AvgL	cd/m2
L_0~180(65)av	3024
L_0~180(75)av	1388
L_0~180(85)av	524
L_90~270(65)av	2996
L_90~270(75)av	1335
L_90~270(85)av	495
L_45(65)av	2975
L_45(75)av	1323
L_45(85)av	471

Standard: GB/T 29293-2012

C Range: 0 - 360DEG  
C Interval: 30.0DEG  
Test Speed: HIGH  
Temperature:25.3℃  
Operators:zoe  
Test Date:2025-1-10

Range: 0 - 180DEG  
Interval: 1.0DEG  
Test System:EVERFINE GO-SPEX500\_V1 SYSTEM V2.00.461  
Humidity:65.0%  
Test Distance:3.160m [K=1.0000]  
Remarks: LAMP:BXRE-30H1000-A-83 Ra:95  
LENS:PM-1100 15R  
NOT DRIVER:48V  
30minutes warm-up

## Planar Illuminance Curve



C Range: 0 - 360DEG  
 C Interval: 30.0DEG  
 Test Speed: HIGH  
 Temperature: 25.3 °C  
 Operators: zoe  
 Test Date: 2025-1-10

Range: 0 - 180DEG  
 Interval: 1.0DEG  
 Test System: EVERFINE GO-SPEX500\_V1 SYSTEM V2.00.461  
 Humidity: 65.0%  
 Test Distance: 3.160m [K=1.0000]  
 Remarks: LAMP: BXRE-30H1000-A-83 Ra: 95  
 LENS: PM-1100 15R  
 NOT DRIVER: 48V  
 30minutes warm-up



## LUMINOUS DISTRIBUTION INTENSITY DATA

Test:U:47.997V I:0.3030A P:14.543W PF:1.0000 Freq:0Hz Lamp Flux:1597.4lx1 lm		
NAME: OZ48-SBZ-64	TYPE:	WEIGHT:
SPEC.: 3000K	DIM.:	SERIAL No.: 2501100048
MFR.: RISE	SUR.: 0.00246176m2	Shielding Angle:

Table--1

UNIT: cd

C(DEG) (DEG)	0	30	60	90	120	150	180	210	240	270	300	330						
0	5438	5438	5438	5438	5438	5438	5438	5438	5438	5438	5438	5438						
5	4117	4244	4286	4385	4389	4434	4408	4263	4202	4108	4085	4094						
10	1531	1724	1657	1860	1756	1920	1909	1680	1703	1529	1515	1508						
15	548	574	573	599	592	629	638	586	568	536	542	537						
20	251	256	252	257	252	265	270	253	252	244	249	247						
25	116	118	115	113	108	113	115	112	117	114	115	113						
30	54.7	57.9	55.7	54.9	52.5	54.0	54.6	55.6	57.1	54.8	54.3	53.4						
35	29.9	31.5	30.7	30.4	29.3	29.9	30.2	30.9	31.0	30.1	29.7	29.4						
40	18.8	19.9	19.4	19.4	18.5	19.0	19.1	19.4	19.4	19.1	19.0	18.7						
45	13.1	13.5	13.5	13.4	12.9	13.1	13.0	13.0	12.8	13.3	12.9	13.0						
50	9.70	9.88	9.97	9.95	9.63	9.53	9.54	9.48	9.27	9.67	9.50	9.69						
55	7.39	7.57	7.68	7.69	7.38	7.21	7.25	7.16	6.96	7.10	7.21	7.36						
60	5.46	5.60	5.71	5.68	5.39	5.12	5.20	5.09	4.93	4.98	5.19	5.36						
65	3.26	3.38	3.49	3.43	3.18	2.96	3.03	2.89	2.79	2.80	2.98	3.13						
70	1.66	1.73	1.86	1.84	1.67	1.58	1.67	1.53	1.47	1.43	1.50	1.59						
75	0.86	0.91	0.99	0.96	0.86	0.83	0.91	0.82	0.78	0.74	0.77	0.81						
80	0.40	0.42	0.46	0.43	0.38	0.37	0.41	0.36	0.36	0.34	0.35	0.37						
85	0.11	0.11	0.13	0.12	0.10	0.10	0.11	0.09	0.09	0.09	0.09	0.10						
90	0.00	0.00	0.00	0.00	0.00	0.00	0.00	0.00	0.00	0.00	0.00	0.00						
95	0.00	0.00	0.00	0.00	0.00	0.00	0.00	0.00	0.00	0.00	0.00	0.00						
100	0.00	0.00	0.00	0.00	0.00	0.00	0.00	0.00	0.00	0.00	0.00	0.00						
105	0.00	0.00	0.00	0.00	0.00	0.00	0.00	0.00	0.00	0.00	0.00	0.00						
110	0.00	0.00	0.00	0.00	0.00	0.00	0.00	0.00	0.00	0.00	0.00	0.00						
115	0.00	0.00	0.00	0.00	0.00	0.00	0.00	0.00	0.00	0.00	0.00	0.00						
120	0.00	0.00	0.00	0.00	0.00	0.00	0.00	0.00	0.00	0.00	0.00	0.00						
125	0.00	0.00	0.00	0.00	0.00	0.00	0.00	0.00	0.00	0.00	0.00	0.00						
130	0.00	0.00	0.00	0.00	0.00	0.00	0.00	0.00	0.00	0.00	0.00	0.00						
135	0.00	0.00	0.00	0.00	0.00	0.00	0.00	0.00	0.00	0.00	0.00	0.00						
140	0.00	0.00	0.00	0.00	0.00	0.00	0.00	0.00	0.00	0.00	0.00	0.00						
145	0.00	0.00	0.00	0.00	0.00	0.00	0.00	0.00	0.00	0.00	0.00	0.00						
150	0.00	0.00	0.00	0.00	0.00	0.00	0.00	0.00	0.00	0.00	0.00	0.00						
155	0.00	0.00	0.00	0.00	0.00	0.00	0.00	0.00	0.00	0.00	0.00	0.00						
160	0.00	0.00	0.00	0.00	0.00	0.00	0.00	0.00	0.00	0.00	0.00	0.00						
165	0.00	0.00	0.00	0.00	0.00	0.00	0.00	0.00	0.00	0.00	0.00	0.00						
170	0.00	0.00	0.00	0.00	0.00	0.00	0.00	0.00	0.00	0.00	0.00	0.00						
175	0.00	0.00	0.00	0.00	0.00	0.00	0.00	0.00	0.00	0.00	0.00	0.00						
180	0.00	0.00	0.00	0.00	0.00	0.00	0.00	0.00	0.00	0.00	0.00	0.00						

C Range: 0 - 360DEG  
C Interval: 30.0DEG  
Test Speed: HIGH  
Temperature:25.3℃  
Operators:zoe  
Test Date:2025-1-10

Range: 0 - 180DEG  
Interval: 1.0DEG  
Test System:EVERFINE GO-SPEX500\_V1 SYSTEM V2.00.461  
Humidity:65.0%  
Test Distance:3.160m [K=1.0000]  
Remarks: LAMP:BXRE-30H1000-A-83 Ra:95  
LENS:PM-1100 15R  
NOT DRIVER:48V  
30minutes warm-up